

GREAT WESTERN

METROPOLITAN DISTRICTS

December 22, 2022

Weld County
Office of the Clerk and Recorder
1402 N 17th Ave.
Greeley, CO 80631

VIA EMAIL: ckoppes@weldgov.com
cc: weld-districts@weldgov.com

Weld County
Office of the Assessor
1400 N. 17th Avenue
Greeley, CO 80631

VIA EMAIL: bdone@weldgov.com
cc: assessor@weldgov.com

State of Colorado
Department of Local Affairs
1313 Sherman Street, Suite 521
Denver, CO 80203

Via E-Filing Portal
Great Western Metro District #1- DLG #65922
Great Western Metro District #2- DLG #65923
Great Western Metro District #3- DLG #65924
Great Western Metro District #4- DLG #65925
Great Western Metro District #5- DLG #65926
Great Western Metro District #6- DLG #65927
Great Western Metro District #7- DLG #66037
Great Western Metro District #8
Great Western Metro District #9
Great Western Metro District #10
Great Western Metro District #11

Dear Sir or Ma'am:

As required by statute (C.R.S. 32-1-306) and 32-1-104 (3)(b), all Title 32 Article 1 special districts are required to file a current, accurate map of district boundaries with the County Clerk and Recorder, Assessor and Division of Local Government. On behalf of **Great Western Metropolitan District Nos. 1-11**, please accept the attached updated District boundary map. The District(s) are wholly located within Weld County.

Please feel free to contact me with any questions or concerns.
Sincerely,

**GREAT WESTERN METROPOLITAN
DISTRICT NOS. 1-11**

Bryan Newby

Bryan Newby
District Manager

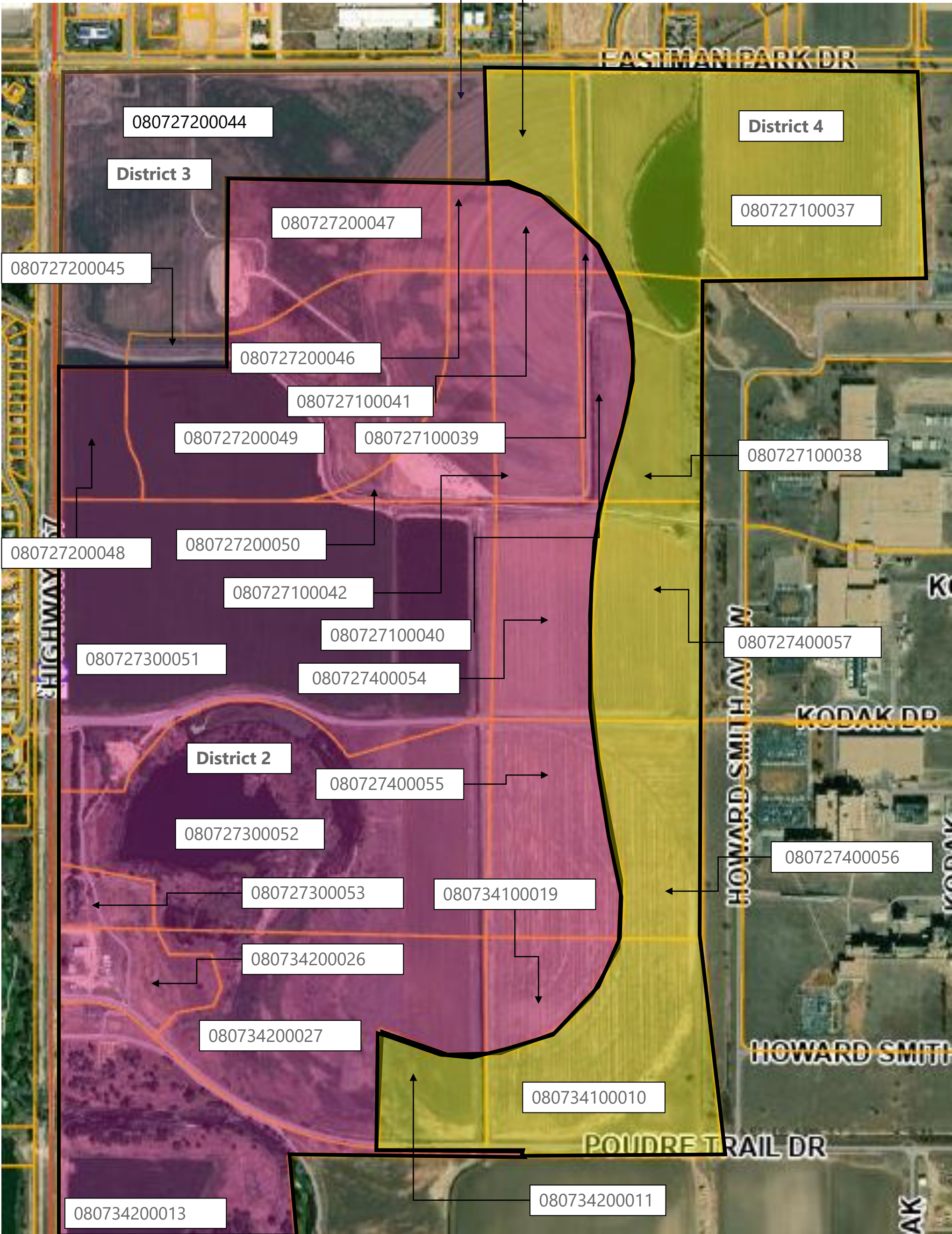
Enc. Map

Managed by Pinnacle Consulting Group, Inc.
GWMDadmin@pinnacleconsultinggroupinc.com
550 E. Eisenhower Blvd | Loveland, CO 80537
Phone: (970) 669-3611 * Fax: (970) 669-3612

GREAT WESTERN METRO DIST – West Side: Existing Bndy

11.23.22

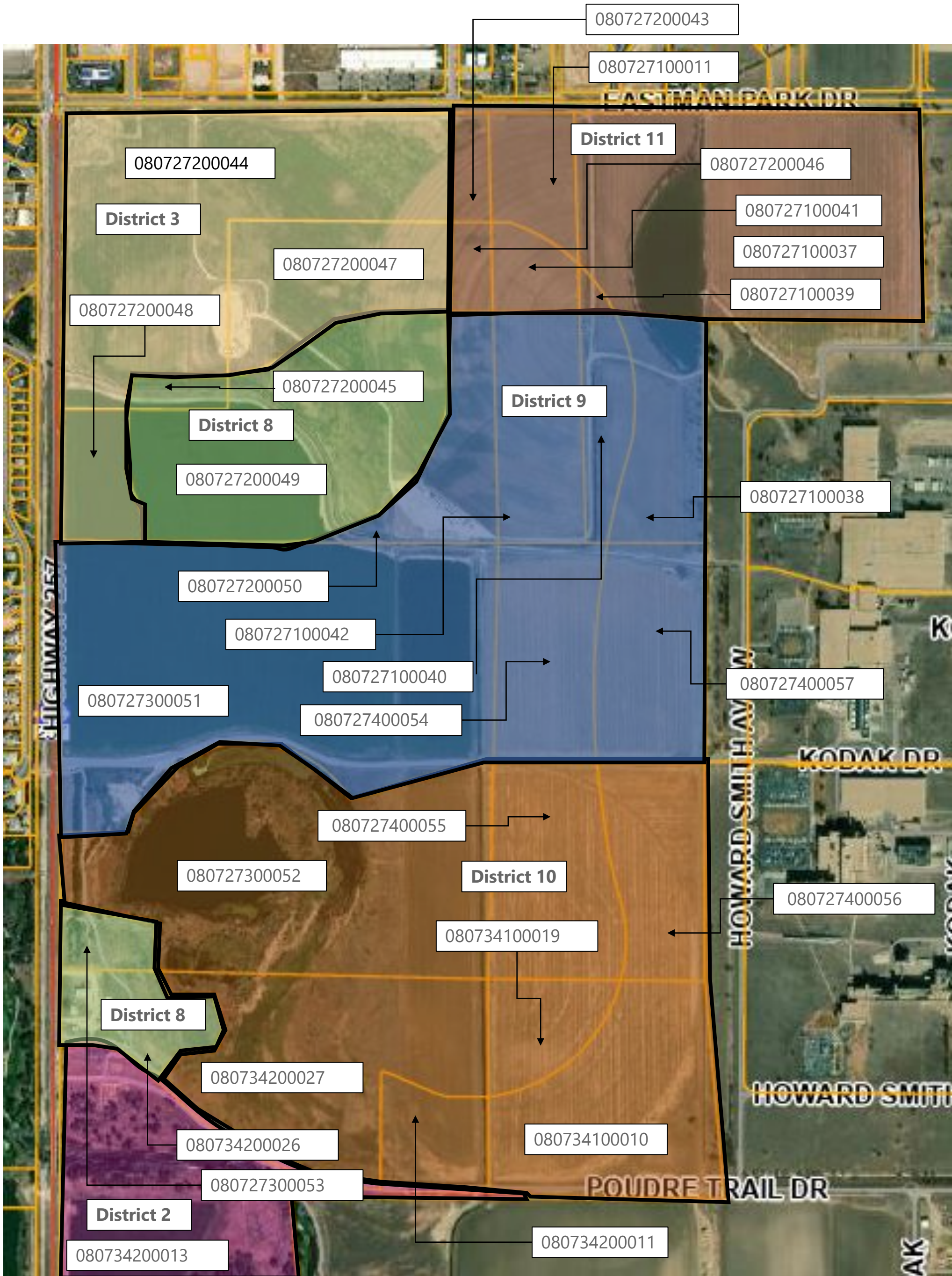
080727200043 080727100011



= Weld Count Parcel #'s

GREAT WESTERN METRO DIST – West Side: Boundary Following Inclusions/Exclusions

11.23.22



Property Exclusions

Exclude from Dist. 2:

1. 080727200046
2. 080727200047
3. 080727200048
4. 080727200049
5. 080727200050
6. 080727300051
7. 080727300052
8. 080727300053
9. 080727400054
10. 080734200026
11. 080734200027
12. 080727100039
13. 080727100040
14. 080727100041
15. 080727100042
16. 080727400055
17. 080734100019

Exclude from Dist. 3:

1. 080727200043
2. 080727200045

Exclude from Dist. 4:

1. 080727100011
2. 080727100037
3. 080727100038
4. 080727400057
5. 080727400056
6. 080734100010
7. 080734200011

Property Inclusions

Include to Dist. 3:

1. 080727200047
2. 080727200048

Include in Dist. 8:

1. 080727200045
2. 080727200049
3. 080727300053
4. 080734200026

Include in Dist. 9:

1. 080727100038
2. 080727100040
3. 080727100042
4. 080727200050
5. 080727300051
6. 080727400054
7. 080727400057

Include in Dist. 10:

1. 080727300052
2. 080734200027
3. 080727400055
4. 080727400056
5. 080734100019
6. 080734100010
7. 080734200011

Include Dist. 11:

1. 080727100011
2. 080727100037
3. 080727100039
4. 080727100041
5. 080727200043
6. 080727200046